

Life Sciences Digital Services

A research report evaluating IT service provider
and CRO capabilities across key areas

Customized report courtesy of:

nexustek



Executive Summary 04

Introduction

Scope of Report 06

Provider Classifications 07

Sweet Spot

Appendix

Methodology & Team 12

Author & Editor Biographies 13

About Our Company & Research 15

Report Author: Rohan Sinha and Sneha Jayanth

AI and platform ecosystems are driving unified transformation across the life sciences value chain

This study shows the life sciences services landscape progressing beyond function-specific transformation toward value-chain-wide modernization, with IT service providers and CROs both repositioning around integrated, AI-enabled and platform-led delivery. Across clinical development, patient engagement, pharmacovigilance, regulatory functions for CROs, and manufacturing, supply chain and commercial operations for service providers, the shift is moving from isolated digital interventions to connected operating models that integrate data, workflows, compliance and outcomes.

A defining pattern across the market is the transition from digital enablement to intelligence-led execution. GenAI is

being embedded into protocol design, documentation, safety processing, engagement orchestration and commercial decision support, while agentic models are beginning to reshape how decisions, content and workflows are coordinated across the life sciences value chain. Rather than functioning as a standalone innovation layer, AI is increasingly being treated as the operating fabric enabling speed, quality, compliance and personalization.

Rising operational complexity and reduced tolerance for fragmented execution are shaping current market dynamics. Clinical and safety environments face demanding regulatory expectations, higher reporting volumes, growing inspection pressure and the need to align interconnected processes across development, regulatory and post-approval functions. Meanwhile, data estates remain distributed across clinical, quality, safety, engagement and enterprise platforms, making interoperability and unified governance essential to achieving transformation success.

A structural shift toward cloud-native, interoperable and platform-centric

AI-native, platform-driven transformation is redefining life sciences value chains



Executive Summary

architectures is accelerating. Unified data foundations, API-led integration, microservices and connected ecosystems spanning clinical, safety, regulatory, engagement and enterprise platforms are emerging as the backbone of scalable modernization. This reflects a broader need for longitudinal visibility, cross-functional intelligence and regulatory-grade traceability throughout the product lifecycle.

Another major shift is the acceleration of decentralized and hybrid models. Clinical development and patient engagement are moving toward lower-friction, more distributed participation models supported by digital tools, remote interactions and real-world data integration. This is expanding the role of technology from workflow support to experience orchestration, with patient-centricity now directly linked to enrollment, retention, adherence and data continuity.

Within this context, CROs are evolving from execution-focused delivery partners to technology-enabled strategic actors. Clinical execution, patient engagement and safety operations are increasingly evaluated together,

and differentiation is shifting toward the ability to combine hybrid trial infrastructure, AI-enabled workflows, integrated governance and predictable delivery.

Enterprise buyers are prioritizing end-to-end data integration, governance and execution visibility over point solutions. Across the value chain, the emphasis is on connected data environments that support faster decisions, stronger auditability and better workflow coordination. In clinical development, this requires interoperable ecosystems spanning study design, trial management, data capture and regulatory documentation. In patient engagement, it requires unified patient views across multiple interaction channels. In pharmacovigilance and regulatory functions, it demands harmonized environments linking safety, regulatory, clinical and quality systems. Enterprises are also investing in AI, GenAI and automation as foundational levers of operational performance. Key priorities include accelerating protocol design, improving site selection, automating data mapping, detecting anomalies, enabling AI-assisted documentation,

strengthening signal detection, personalizing engagement, improving adherence, supporting intelligent case processing and orchestrating next-best actions. The expectation is that AI will simultaneously reduce cycle times, improve decision quality and strengthen compliance.

Expectations differ across partner types. Service providers are expected to drive enterprise-level transformation and business layers combining platform engineering, cloud modernization, data foundations, commercial enablement and manufacturing digitization. CROs are expected to deliver differentiated value where operational depth intersects with digital execution, particularly in clinical delivery, patient engagement, pharmacovigilance operations and flexible sourcing models.

GenAI and agentic AI adoption priorities also vary by function. Clinical development focuses on protocol optimization, feasibility and intelligent documentation. Patient engagement emphasizes hyper-personalized journeys and conversational interfaces. Pharmacovigilance and regulatory functions prioritize automation, signal detection and

structured authoring. Commercial operations focus on decision intelligence and content generation, while manufacturing and supply chain functions emphasize predictive and real-time operational insights.

The ecosystem is evolving through a mix of convergence and differentiation. Service providers are expanding their role through platform engineering, AI enablement, consulting-led transformation and managed services spanning commercial operations, manufacturing, supply chain and enterprise IT layers. Their strength lies in integrating front-, middle- and back-office systems into cohesive, scalable architectures.

CROs are advancing deeper into technology-enabled delivery within the regulated core of the value chain. They are embedding AI, analytics and digital platforms into clinical operations, patient engagement and pharmacovigilance processes to enhance execution quality, speed and predictability. Their evolution centers on combining operational depth with digital acceleration.



Convergence is most visible in clinical data ecosystems, patient engagement and AI-driven orchestration. Both service providers and CROs are building capabilities around interoperable data platforms, workflow automation, predictive analytics and patient-centric models. Success in these areas depends on embedding intelligence directly into operational workflows.

Despite convergence, structural differentiation persists. CROs retain strengths in clinical execution, patient access, pharmacovigilance operations and flexible delivery models. Service providers maintain advantages in enterprise-scale transformation, including commercial platforms, manufacturing modernization, cloud infrastructure and cross-functional integration. The result is a complementary yet increasingly overlapping competitive landscape.

Ecosystem-led strategies are becoming more critical. Partnerships, co-innovation models and platform ecosystems play a key role in delivering integrated solutions that combine domain expertise, data interoperability and AI capabilities across the value chain.

The market is entering a new phase defined by progression from GenAI-enabled productivity to agentic coordination and, ultimately, more autonomous operations. Competitive advantage will increasingly depend on the ability to embed intelligence across end-to-end workflows spanning clinical development, patient engagement, pharmacovigilance, manufacturing and commercial functions.

Platformization will continue to intensify as unified data environments and interoperable architectures become essential for scaling AI in regulated environments. As a result, boundaries between service providers and CROs will continue to blur, particularly in clinical, patient and regulatory domains where data, execution and compliance intersect.

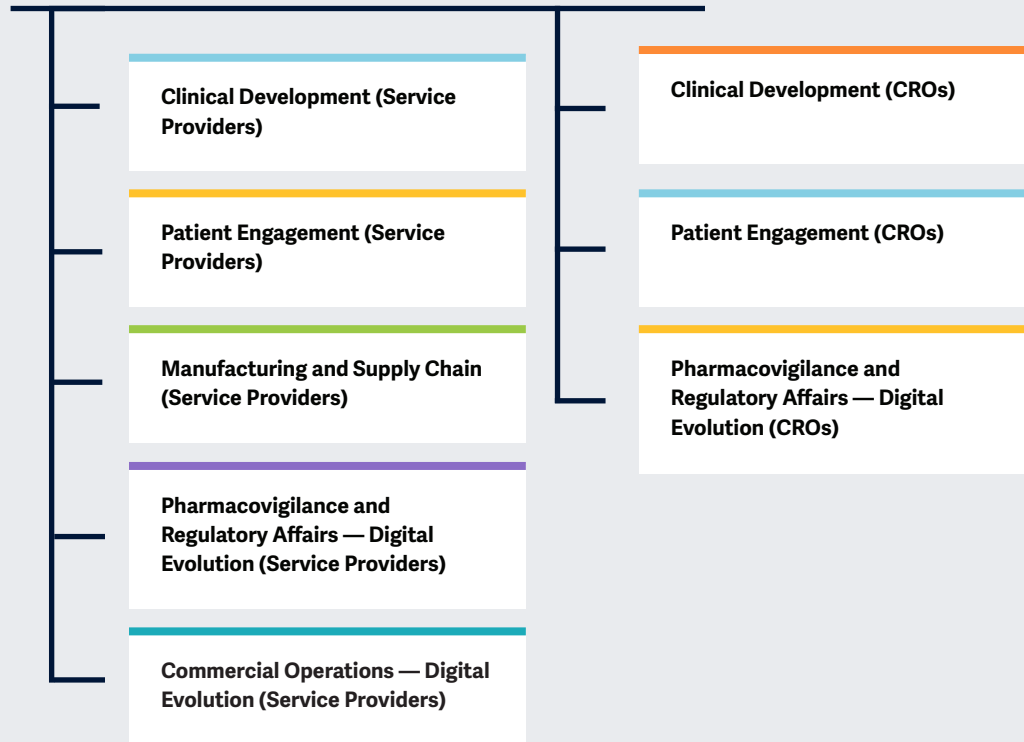
Future competitive shifts will be driven by the ability to combine regulatory-grade trust, connected data foundations, AI-native workflows and measurable business impact. The market will increasingly reward organizations that can translate value-chain complexity into integrated, intelligent and scalable operating models.

Life sciences enterprises are accelerating AI, GenAI and platform adoption to drive end-to-end integration across clinical, patient, regulatory and commercial functions. The convergence of service providers and CROs is reshaping delivery models, with increasing focus on data interoperability, intelligent workflows and patient-centric outcomes.



This study focuses on **digital transformation solutions and services** for the **life sciences** industry.

Simplified Illustration Source: ISG 2026



Scope of the Report

This ISG Provider Lens® quadrant report covers the following eight quadrants for services/solutions: Clinical Development (Service Providers), Patient Engagement (Service Providers), Manufacturing and Supply Chain (Service Providers), Pharmacovigilance and Regulatory Affairs - Digital Evolution (Service Providers), Commercial Operations - Digital Evolution (Service Providers), Clinical Development (CROs), Patient Engagement (CROs) and Pharmacovigilance and Regulatory Affairs - Digital Evolution (CROs)

This ISG Provider Lens® study offers IT-decision makers:

- Transparency on the strengths and weaknesses of relevant providers
- A differentiated positioning of providers by segments
- Focus on Global market



This ISG Provider Lens® study offers IT-decision makers: Our study serves as the basis for important decision-making in terms of positioning, key relationships and go-to-market considerations. ISG advisors and enterprise clients also use information from these reports to evaluate their existing provider.

Provider Classifications

The provider position reflects the suitability of providers for a defined market segment (quadrant). Without further additions, the position always applies to all company sizes classes and industries. In case the service requirements from enterprise customers differ and the spectrum of providers operating in the local market is sufficiently wide, a further differentiation of the providers by performance is made according to the target group for products and services. In doing so, ISG either considers the industry requirements or the number of employees, as well as the corporate structures of customers and positions providers

according to their focus area. As a result, ISG differentiates them, if necessary, into two client target groups that are defined as follows:

- **Midmarket:** Companies with 100 to 4,999 employees or revenues between \$20 million and \$999 million with central headquarters in the respective country, usually privately owned.
- **Large Accounts:** Multinational companies with more than 5,000 employees or revenue above \$1 billion, with activities worldwide and globally distributed decision-making structures.

The ISG Provider Lens® quadrants are created using an evaluation matrix containing four segments (Leader, Product & Market Challenger and Contender), and the providers are positioned accordingly. Each ISG Provider Lens® quadrant may include a service provider(s) which ISG believes has strong potential to move into the Leader quadrant. This type of provider can be classified as a Rising Star.

- **Number of providers in each quadrant:** ISG rates and positions the most relevant providers according to the scope of the report for each quadrant and limits the maximum of providers per quadrant to 25 (exceptions are possible).





Sweet Spot

NexusTek

Overview

Nexustek, headquartered in Greenwood Village, Colorado, provides managed IT, cloud, cybersecurity and professional services. It enables secure, scalable digital transformation through infrastructure, data and AI capabilities. In life sciences, it supports GxP compliance, data integrity and resilient operations in regulated environments.

Key Provider Capabilities

- **Platform products:**

- **End-to-end support for the life sciences domain:** Nexustek demonstrates strong vertical alignment across the product lifecycle, from R&D and clinical trials to manufacturing and commercialization. Its capabilities address core industry challenges, such as accelerating drug development, enhancing trial integrity, enabling compliant supply chains and improving patient engagement outcomes.

- **Secure and compliant digital infrastructure:** A key strength of Nexustek lies in its ability to deliver GxP- and HIPAA-aligned infrastructure, combining hybrid cloud, cybersecurity

and disaster recovery. The firm ensures data integrity, audit readiness and operational continuity, which are critical in regulated environments handling sensitive clinical and patient data.

- **Data, AI and managed intelligence:** Nexustek's managed intelligence capabilities focus on modern data architecture, governance and AI and ML enablement. It supports use cases such as drug discovery, diagnostics and advanced analytics through scalable platforms and model training aligned with life sciences needs.

- **Regulatory, quality and validation services:** Nexustek integrates compliance into core IT and business processes through services such as CSV, CSA, audit management and

quality consulting. This integration ensures alignment with evolving global regulatory standards and strengthens inspection readiness.

- **Managed services and cost optimization:** Nexustek delivers 24/7 IT operations, end-user support and cloud cost optimization. Its managed services model enhances scalability, reduces operational burden and enables life sciences enterprises to focus on innovation while maintaining cost discipline.

Overall, Nexustek's capabilities are characterized by domain-centric, compliant and AI-enabled service delivery tailored to the complexity of life sciences.

Benefits Delivered

- Accelerates R&D and time-to-market
- Improves trial quality and compliance
- Ensures data security and audit readiness
- Enables scalable, resilient cloud operations
- Optimizes costs and efficiency
- Enhances patient engagement
- Supports AI- and ML-driven innovation



NexusTek

Sweet Spot

Nexustek's sweet spot in life sciences lies in enabling secure, compliant and scalable digital environments tailored to the industry's stringent regulatory and data integrity requirements. The firm is well positioned to support organizations managing sensitive clinical, operational and patient data, where audit readiness, system validation and uninterrupted operations are critical.

A core strength is its ability to embed GxP-aligned compliance and governance into IT infrastructure and service delivery. By integrating cybersecurity, hybrid cloud and disaster recovery, Nexustek ensures protection of regulated data while maintaining business continuity across R&D and commercial operations. This positioning makes Nexustek particularly relevant for

organizations navigating complex regulatory landscapes and global compliance mandates.

Nexustek's managed services model further reinforces this positioning, offering end-to-end IT operations support, including L1-L3 services, service delivery management and capabilities such as knowledge, capacity and configuration management. The model enables life sciences firms to offload IT complexity while maintaining control, scalability and cost efficiency in highly regulated environments.

Additionally, Nexustek's focus on modern data architecture and AI and ML enablement supports data-driven innovation, from improving research insights to enhancing operational decision-making, without compromising security or compliance.

Overall, Nexustek's sweet spot lies in supporting life sciences enterprises seeking a balance of regulatory rigor, resilient infrastructure and scalable digital transformation.

Future roadmap

- Nexustek's roadmap focuses on expanding cloud-led, compliant digital transformation through deeper investments in hybrid cloud, cybersecurity and resilient infrastructure. It aims to scale its managed services model (L1-L3 support, automation and service delivery) to improve efficiency and UX. The firm is also strengthening data and AI and ML capabilities, including modern data platforms and governance, to enable data-driven insights. Additionally, Nexustek enhances compliance and validation services while driving automation and cost optimization across integrated IT environments.





Appendix

The ISG Provider Lens® 2026 – Life Sciences Digital Services study analyzes the relevant software vendors/service providers in the Global market, based on a multi-phased research and analysis process, and positions these providers based on the ISG Research methodology.

Study Sponsor:

Iain Fisher

Lead Authors:

Rohan Sinha and Sneha Jayanth

Editors:

Sajina B, Priyanka Richi

Research Analyst:

Sneha Jayanth

Data Analyst:

Kruthika Sulghur

Consultant Advisors:

Jein Stein, Randy Tucker and Michael Fullwood

Project Manager:

Sreya Ghosh

Information Services Group Inc. is solely responsible for the content of this report. Unless otherwise cited, all content, including illustrations, research, conclusions, assertions and positions contained in this report were developed by, and are the sole property of, Information Services Group Inc.

The research and analysis presented in this report includes research from the ISG Provider Lens® program, ongoing ISG Research programs, interviews with ISG advisors, briefings with service providers and analysis of publicly available market information from multiple sources. The data collected for this report represent information that ISG believes to be current as of April 2026 for providers that actively participated and for providers that did not. ISG recognizes that many mergers and acquisitions may have occurred since then, but this report does not reflect these changes.

All revenue references are in U.S. dollars (\$US) unless noted otherwise.

The study was conducted in the following steps:

1. Definition of Life Sciences Digital Services market
2. Use of questionnaire-based surveys of service providers/ vendor across all trend topics
3. Interactive discussions with service providers/vendors on capabilities and use cases
4. Leverage ISG's internal databases and advisor knowledge & experience (wherever applicable)
5. Detailed analysis and evaluation of services and service documentation based on the facts & figures received from providers and other sources.
6. Use of the following key evaluation criteria:
 - * Strategy and vision
 - * Innovation
 - * Brand awareness and presence in the market
 - * Sales and partner landscape
 - * Breadth and depth of portfolio of services offered
 - * Technology advancements



Author and Editor Biographies

Lead Author



Rohan Sinha
Senior Manager and Principal Analyst

Rohan Sinha is a seasoned professional with over a decade of experience as an analyst in the healthcare and life sciences industries. He has been at the forefront in offering strategic guidance to industry CIOs, leveraging a wealth of published research and extensive interactions with industry stalwarts.

His work has been instrumental in shaping the strategies and decisions of organizations in these critical industries. Rohan also possesses a keen interest in the world of AI and GenAI, where he continually explores the significant impact of these cutting-edge technologies on the said industries.

Lead Author and Research Analyst



Sneha Jayanth
Lead Analyst

Sneha Jayanth is a Lead Analyst at ISG with over eight years of experience in ICT-related market intelligence and thought leadership. She plays a pivotal role in leading and co-authoring ISG Provider Lens® studies across Healthcare, Life Sciences, Medical Devices, and custom research engagements. Her work has contributed to shaping enterprise strategies by delivering actionable insights on market trends and technology adoption.

Sneha's background includes research on transformative technologies such as IoT, AI, cloud, and Analytics and developing thought leadership in the ICT sector. She also leads the creation of IPL reports that capture key trends and insights relevant to the broader provider landscape. Her research is recognized for its depth, clarity, and strategic value in guiding decision-makers in complex and evolving industries.



Author and Editor Biographies

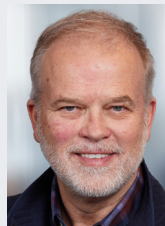


Study Sponsor

Iain Fisher
Director, Research

Iain Fisher is ISG's head of industry research and market trends. With over 20 years in consulting and strategic advisory, Iain now focuses on cross industry research with an eye on technology led digital innovation, creating new strategies, products, services, and experiences by analyzing end-to-end operations and measuring efficiencies focused on redefining customer experiences. Fisher is published, known in the market and advises on how to achieve strategic advantage. A thought leader on Future of Work, Customer Experience, ESG, Aviation and cross industry solutioning. He provides major market insights leading to changes to business models and operating models to drive out new ways of working.

Fisher works with enterprise organizations and technology providers to champion the change in customer focused delivery of services and solutions in challenging situations. Fisher is also a regular Keynote speaker and online presenter, having authored several eBooks on these subjects.



IPL Product Owner

Jan Erik Aase
Partner and Global Head – ISG Provider Lens®

Mr. Aase brings extensive experience in the implementation and research of service integration and management of both IT and business processes. With over 35 years of experience, he is highly skilled at analyzing vendor governance trends and methodologies, identifying inefficiencies in current processes, and advising the industry. Jan Erik has experience on all four sides of the sourcing and vendor governance lifecycle - as a client, an industry analyst, a service provider and an advisor.

Now as a partner and global head of ISG Provider Lens®, he is very well positioned to assess and report on the state of the industry and make recommendations for both enterprises and service provider clients.



Provider Lens®

The ISG Provider Lens® Quadrant research series is the only service provider evaluation of its kind to combine empirical, data-driven research and market analysis with the real-world experience and observations of ISG's global advisory team. Enterprises will find a wealth of detailed data and market analysis to help guide their selection of appropriate sourcing partners. ISG advisors use the reports to validate their own market knowledge and make recommendations to ISG's enterprise clients. The research currently covers providers offering their services across multiple geographies globally.

For more information about ISG Provider Lens® research, please visit this [webpage](#).

Research™

ISG Research™ provides subscription research, advisory consulting and executive event services focused on market trends and disruptive technologies driving change in business computing. ISG Research™ delivers guidance that helps businesses accelerate growth and create more value.

ISG offers research specifically about providers to state and local governments (including counties and cities) and higher education institutions. Visit: [Public Sector](#).

For more information about ISG Research™ subscriptions, please email contact@isg-one.com, call +1.203.454.3900, or visit research.isg-one.com.

ISG (Information Services Group) (Nasdaq: III) is a leading global AI-centered technology research and advisory firm. A trusted partner to more than 900 clients, including 75 of the world's top 100 enterprises, ISG is a long-time leader in technology and business services sourcing that is now at the forefront of leveraging AI to help organizations achieve operational excellence and faster growth.

The firm, founded in 2006, is known for its proprietary market data, in-depth knowledge of provider ecosystems, and the expertise of its 1,600 professionals worldwide working together to help clients maximize the value of their technology investments.

For more information, visit isg-one.com.





APRIL, 2026



REPORT: LIFE SCIENCES DIGITAL SERVICES